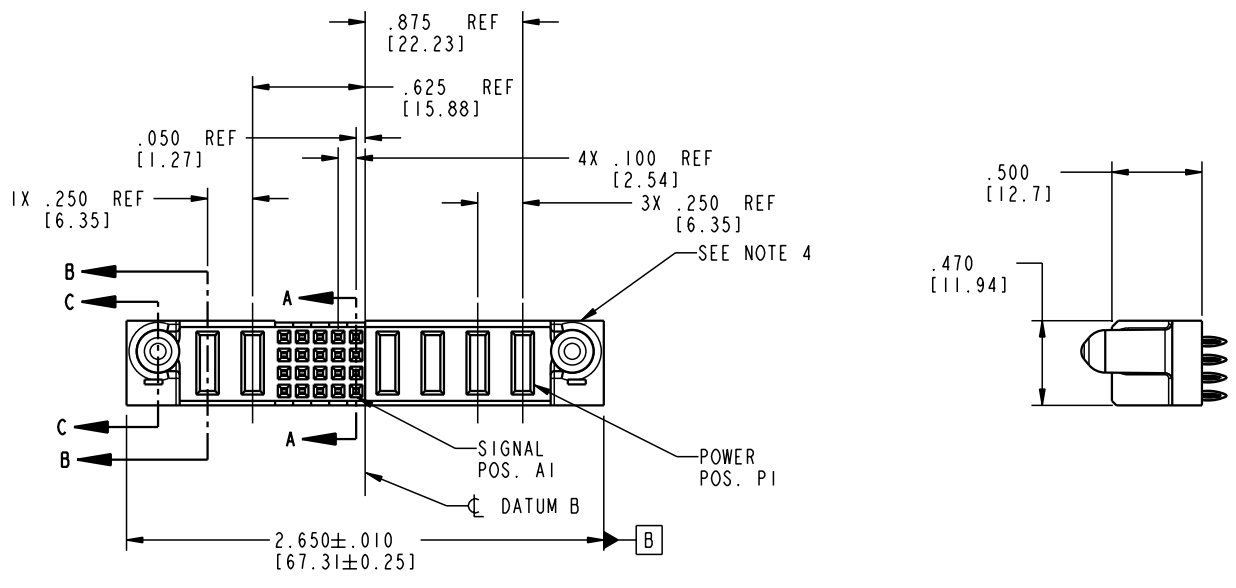


Tous droits strictement réservés. Reproduction ou communication à des tiers interdite sous quelque forme que ce soit sans autorisation écrite du propriétaire. Propriété de c FCI. Droits de reproduction FCI.

All rights strictly reserved. Reproduction or issue to third parties in any form whatever is not permitted without written authority from the proprietor. Property of FCI. Copyright FCI.



PRODUCT NO.	ROWS	POWER		SIGNAL					POWER				E1		
		E2	P6	P5	5	4	3	2	1	P4	P3	P2		P1	
51740-10402002CC	D C B A		PC	PC	F	F	F	F	F	F	PC	PC	PC	PC	



CODE	DIM "M" MATING LENGTH	CONTACT TYPE
PC	.042 [1.07]	POWER
F	N/A [N/A]	SIGNAL

mat'l code		SEE NOTE 2		tolerances unless otherwise specified		CUSTOMER	
lfr	ecn no.	dr	date	linear	.XX±.01/0.XX±0.3	COPY	
A	V03-0286	MEM	3/10/03	angles	.XXX±.005/0.XX±0.13	projection	
					.XXX±.0020/0.XXX±0.051	INCH/MM	
				dr	M. MOSTOLLER 3/10/03	scale	
				enr	M. MOSTOLLER 3/10/03	1:1	
				chr	H. BREWBAKER 3/10/03		
				appd	M. MOSTOLLER 3/10/03		
sheet index	revision	A	A	A	A		
	sheet	1	2	3	4		

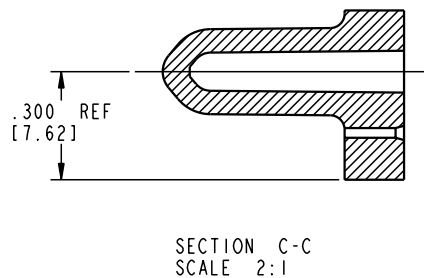
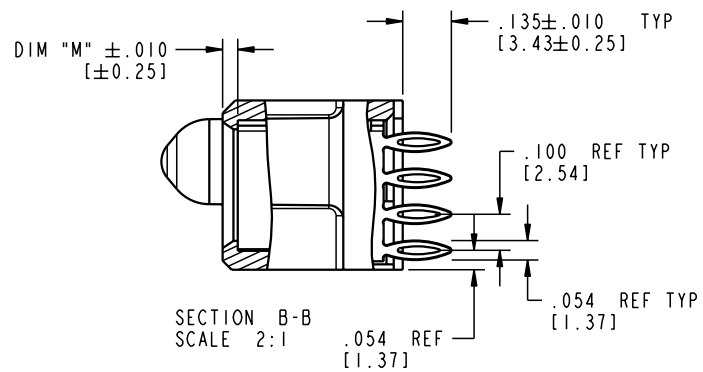
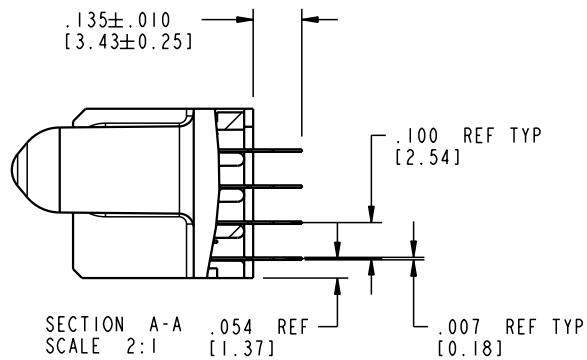
www.fciconnect.com		title		product family		code	
FCI		4P + 20S + 2P		PwrBlade		213	
VERTICAL PRESS FIT RECEPT		size		dwg no		sheet	
A		51740-10402002CC				1 of 4	


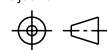
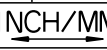
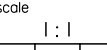
Pro/E	3	cage code	22526	4
-------	---	-----------	-------	---

Tous droits strictement réservés. Reproduction ou communication a des tiers interdite sous quelque forme que ce soit sans autorisation écrite du propriétaire. Propriete de c FCI. Droits de reproduction FCI.

All rights strictly reserved. Reproduction or issue to third parties in any form whatever is not permitted without written authority from the proprietor. Property of FCI. Copyright FCI.

PRODUCT NUMBER  
51740-10402002CC



mat'l code				SEE NOTE 2		tolerances unless otherwise specified		CUSTOMER		 www.fciconnect.com	
lfr	ecn no.	dr	date	linear	.XX ± .01/0.XX ± 0.3	projection		COPY		title	
A				angles	.XXX ± .005/0.XX ± 0.13					4P + 20S + 2P	
				dr	.XXX ± .0020/0.XXX ± 0.051			product family		code	
				enr	0 ± 2°	1:1		PwrBlade		213	
				chr				size		sheet	
				appd				A		2 of 4	
sheet index		revision sheet		M. MOSTOLLER 3/10/03		M. MOSTOLLER 3/10/03		51740-10402002CC			
				M. MOSTOLLER 3/10/03				cage code		22526	

Pro/E

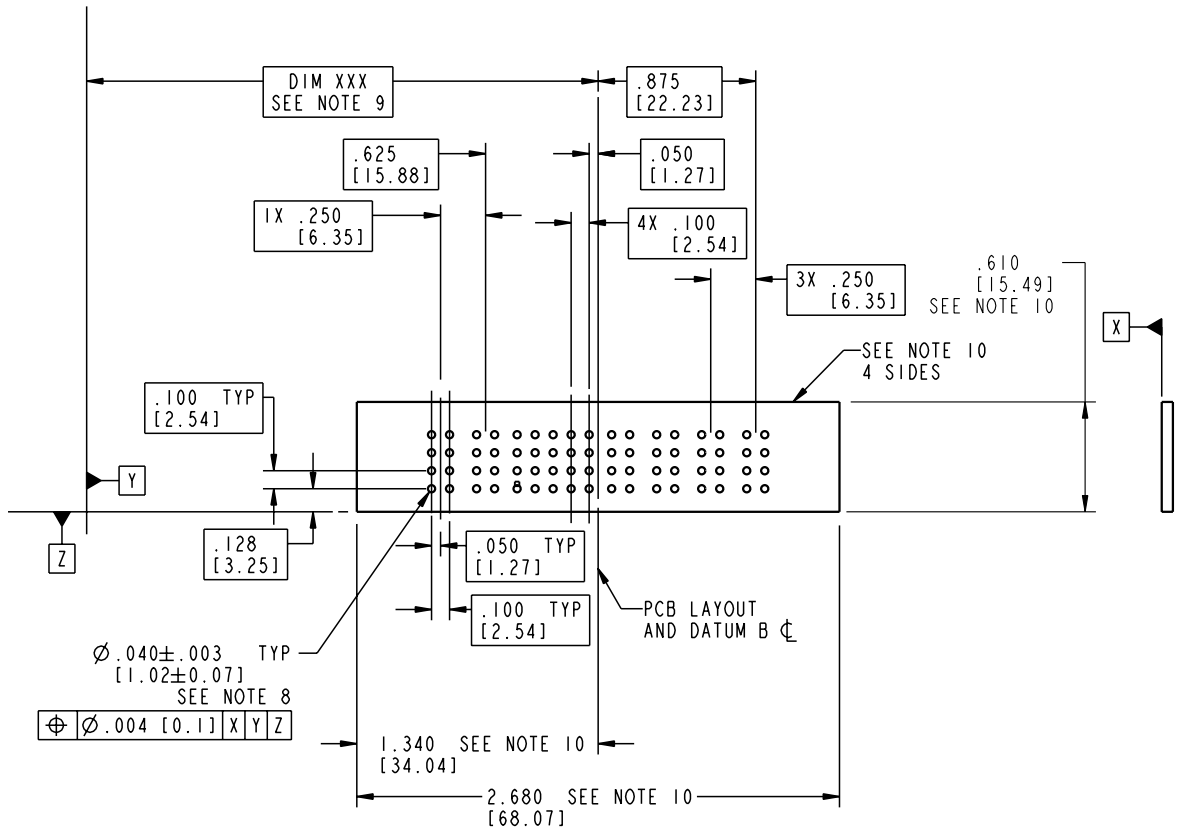
cage code 22526

Tous droits strictement réservés. Reproduction ou communication à des tiers interdite sous quelque forme que ce soit sans autorisation écrite du propriétaire. Propriété de c FCI. Droits de reproduction FCI.

All rights strictly reserved. Reproduction or issue to third parties in any form whatever is not permitted without written authority from the proprietor. Property of FCI. Copyright FCI.

PRODUCT NUMBER  
51740-10402002CC

1 | 2 | 3 | 4



mat'l code SEE NOTE 2				tolerances unless otherwise specified		CUSTOMER		 www.fciconnect.com	
ltr	ecn no.	dr	date	linear	.XX±.01/0.XX±0.3	COPY		title	
A				angles	.XXX±.005/0.XX±0.13	projection		4P + 20S + 2P	
				dr	.XXX±.002/0.XX±0.051	 INCH/MM		VERTICAL PRESS FIT RECEPT product family PwrBlade code size dwg no 213 scale 1:1 A 51740-10402002CC sheet 3 of 4	
sheet index	revision sheet			enr	M. MOSTOLLER 3/10/03				
				chr	H. BREWBAKER 3/10/03				
				appd	M. MOSTOLLER 3/10/03				

1 | 2 | Pro/E | 3 | cage code 22526 | 4

1 | 2

3 |

4

PRODUCT NUMBER

51740-10402002CC

NOTES:

1. DIMENSIONS AND TOLERANCES ARE IN ACCORDANCE WITH ASME Y14.5M, 1994 UNLESS OTHERWISE SPECIFIED.

CONNECTOR NOTES:

- 2 HOUSING MATERIAL: UL 94 V-0 GLASS FILLED  
HIGH-TEMP THERMOPLASTIC  
POWER CONTACT MATERIAL: COPPER ALLOY  
SIGNAL PIN MATERIAL: COPPER ALLOY
- 3. PLATING:  
SIGNAL PINS: 30u"/0.76um Au OVER 50u"/1.27um Ni  
POWER CONTACTS: 50u"/1.27um Ni UNDER ALL  
WITH 30u"/0.76um Au ON CONTACT AREA  
AND SnPb ON PCB INTERFACE

4 MANUFACTURER'S NAME, P/N, AND DATE CODE TO APPEAR ON THIS SURFACE.

5. PRODUCT SPECIFICATION GS-12-149.  
APPLICATION SPECIFICATION BUS-20-067.  
PACKAGED IN TRAYS.

PCB NOTES:

- 6. ALL HOLE DIAMETERS ARE FINISHED HOLE SIZE.
- 7. MOUNTING HOLES, WHERE APPLICABLE, ARE UNPLATED.
- 8  $\varnothing .0453 \pm .0010$  [1.151  $\pm$  0.025] DRILLED HOLES PLATED WITH  
.0003 [0.008] MIN SnPb OVER .001 [0.03]  
TO .003 [0.08] Cu PLATING TO ACHIEVE  
 $\varnothing .040 \pm .003$  [1.02  $\pm$  .07] HOLE.
- 9 "DIM XXX" TO BE DETERMINED BY THE CUSTOMER.
- 10 CONNECTOR KEEP-OUT ZONE.

Tous droits strictement réservés. Reproduction ou communication à des tiers interdite sous quelque forme que ce soit sans autorisation écrite du propriétaire. Propriété de c FCI. Droits de reproduction FCI.



All rights strictly reserved. Reproduction or issue to third parties in any form whatever is not permitted without written authority from the proprietor. Property of FCI. Copyright FCI.

mat'l code				SEE NOTE 2		tolerances unless otherwise specified		CUSTOMER		 www.fciconnect.com	
lfr	ecn no.	dr	date	linear	.XX±.01/0.XX±0.3	projection		COPY		title	
A					.XXX±.005/0.XX±0.13					4P + 20S + 2P	
				angles	.XXX±.0020/0.XXX±0.051					VERTICAL PRESS FIT RECEPT	
				dr	0° ± 2°	INCH/MM		product family		code	
				enr	M. MOSTOLLER 3/10/03	scale		PwrBlade		213	
				chr	M. MOSTOLLER 3/10/03	1:1		size		sheet	
				appd	H. BREWBAKER 3/10/03			A		4 of 4	
					M. MOSTOLLER 3/10/03			51740-10402002CC			
sheet index	revision										
	sheet										

1 | 2

Pro/E

3 |

cage code 22526

4